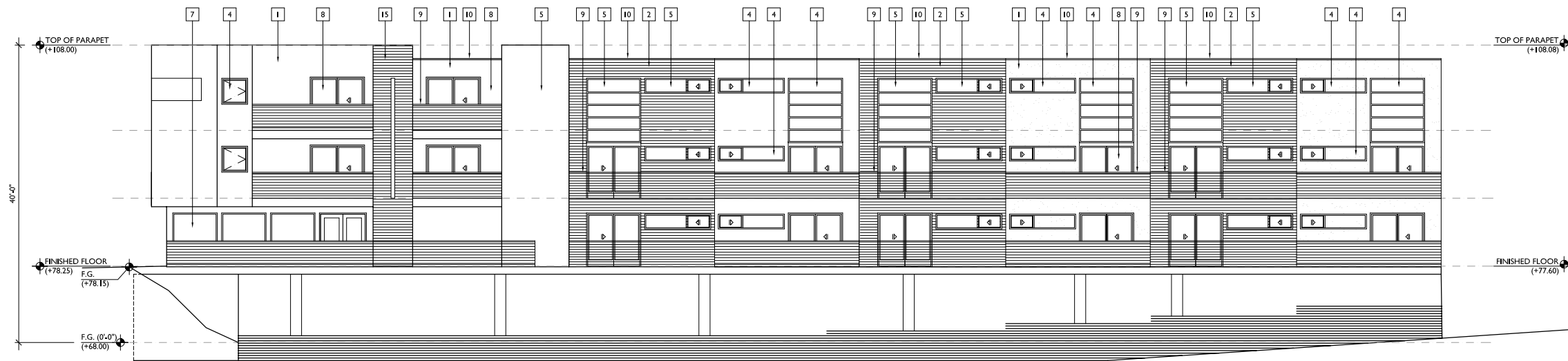




BUILDING C - WEST (COURTYARD) ELEVATION 03  
SCALE: 1/8" = 1'-0"



BUILDING C - EAST (NIMITZ) ELEVATION 02  
SCALE: 1/8" = 1'-0"



BUILDING C - SOUTH (VOLTAIRE) ELEVATION 01  
SCALE: 1/8" = 1'-0"

ELEVATION KEYNOTES:

- 1 SAND FINISH STUCCO (INTEGRAL COLOR), COLOR BY ARCHITECT
- 2 FIBER CEMENT SIDING, COLOR BY ARCHITECT
- 3 CORRUGATED METAL SIDING
- 4 RECESSED ALUMINUM WINDOWS
- 5 FLUSH WINDOW AT SIDING
- 6 CERAMIC TILE, COLOR BY ARCHITECT
- 7 ALUMINUM STOREFRONT
- 8 DOOR PER DOOR SCHEDULE
- 9 GUARDRAIL
- 10 GALVANIZED SHEET METAL COPING
- 11 FINISH GRADE, REFERENCE CIVIL DRAWINGS
- 12 LINE OF ROOF BEYOND
- 13 STANDING SEAM METAL ROOF
- 14 WOOD PLANK FENCE
- 15 HORIZONTAL WOOD SIDING
- 16 WOOD SCREEN
- 17 GARAGE EXHAUST VENT
- 18 METAL MESH SCREEN